

Graph-iVIEW



ESRI
Technology
AUTHORIZED
BUSINESS PARTNER

Version 2.0.7

© 2008 GRAPH SYNERGIE INC.

DESCRIPTION

A 3D solution allowing real-time visualization, consultation and modification of 3D environment (buildings, landscape, textures) without size limitation within a georeferenced context.

CONFIGURATION REQUIREMENTS

Windows XP

NVIDIA graphics controller (preferably) with 256 MB or RAM

Minimum of 2 GB or RAM

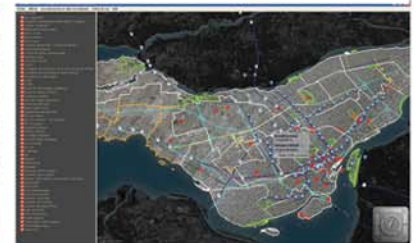
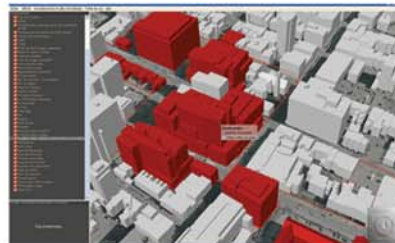
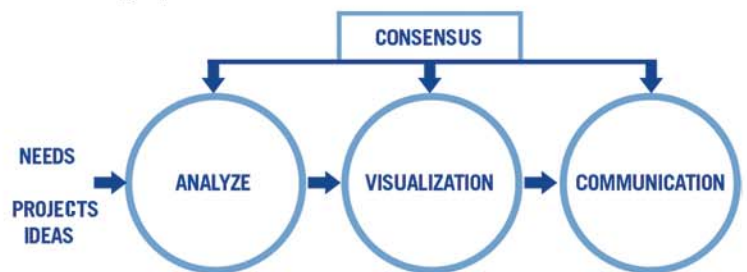
Minimum of 10 GB free hard disk space

(May vary depending on the regional area)



While meeting many needs in the urban development area, **Graph-iVIEW** is also :

- A communication tool for decision-makers which allows them to localize an urban design project, equipments and their territorial as signments, and to view the city and display a neighborhood by setting it in its environment
- A safe information and communication tool intended for citizens and the general public
- An efficient tool for virtual tours of the city and for citizens' territorial appropriation



Graph-iVIEW : the only real-time presentation, consultation and 3D visualization tool for architecture and urban development

- Urban planning and land use: visual representation and communication for future site developments and environmental impact simulation
- Tourism: recreational information presentation, recreational sites localization and territory guided tours
- Public safety: access and itinerary management, critical zone management and sector and building plan consultation
- Telecommunications: antenna positioning and impact, Internet portal enhancement
- Heritage management: highlighting information related to natural or urban heritage
- Geomarketing: network positioning

